

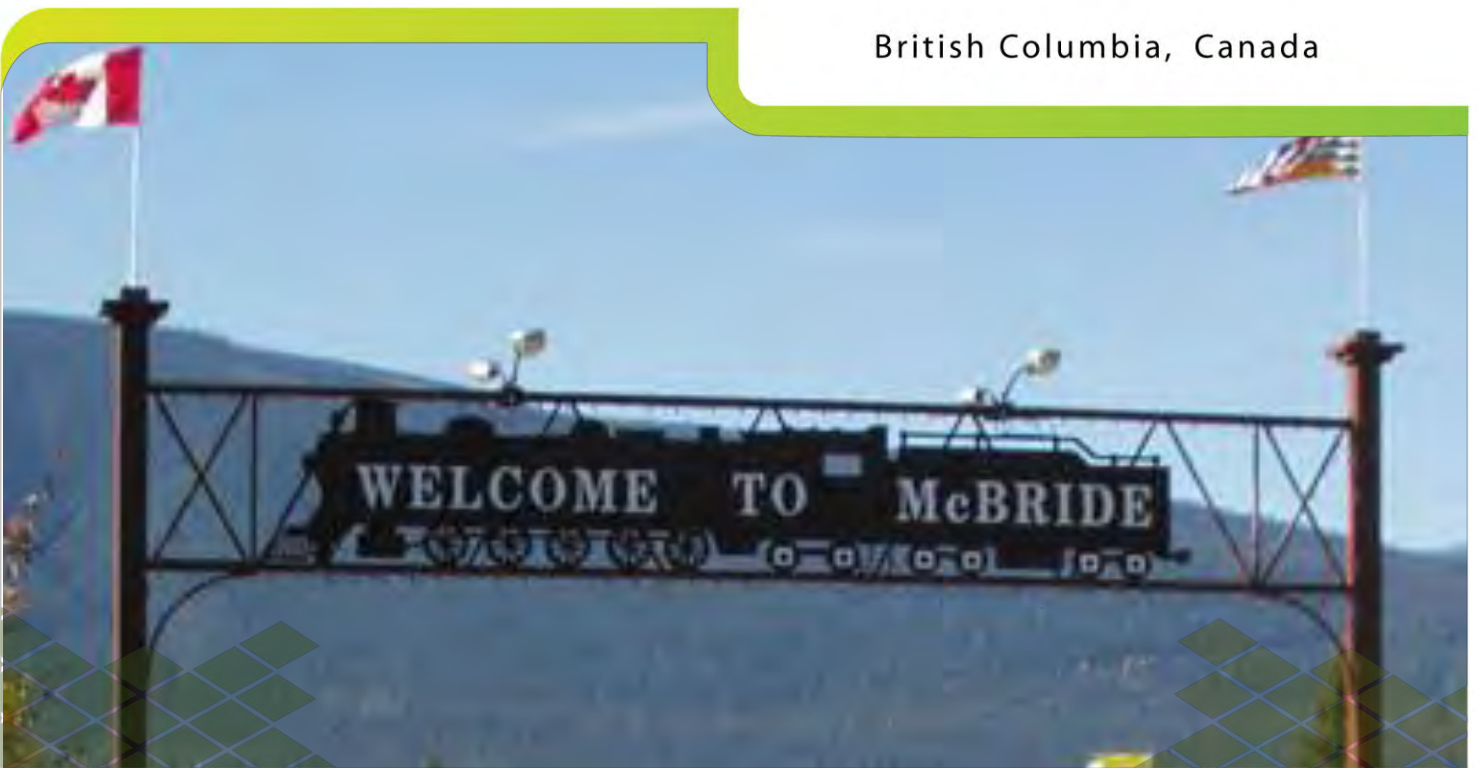
Village of

McBride

and the Robson Valley



British Columbia, Canada



Investment - Ready Community Profile



NORTHERN BC BUSINESS ADVANTAGE

Northern British Columbia is a strategically located, resource-rich economy with many competitive advantages and incentives for business.



Message From The Mayor

On behalf of all residents of McBride and the Robson Valley I want to welcome you and be the first to tell you about the abundance of opportunity available in our community. McBride is a community with a wealth of economic activity in forestry, agriculture and tourism.

Forestry has been a longstanding cornerstone of the local economy. With forests full of beautiful cedar and spruce, local producers have found success in post and rail, lumber and custom order mills.

In addition to forestry, agriculture is what could be considered the second major industry in the Robson Valley. Farms are spread through an 80 km stretch in the valley. Hay and cattle are common in the region, and in recent years the Valley has seen the establishment of specialty farms with a variety of unique, high demand organic crops and even an ice winery!

Our tourism industry has grown rapidly over the past decade. Snowmobiling has become an ever-increasing draw for tourists, raising demand for accommodations, gas stations, restaurants, and specialty shops. The Valley also features world-class hiking, ATV-ing, hunting, fishing, mountain biking and skiing. In collaboration with local user groups, the Village of McBride is actively working to continue to expand the amenities for local activities, which in turn will continue to create new opportunities for investment.

McBride is a warm community that embraces new investors and growth. I hope to see you in our town soon!

Loranne Martin,
Mayor, Village of McBride
mayor@mcbride.ca



CONTENTS

1. Demographics	6
Population	6
Household Income	7
Household Income Distribution	7
Workforce Education Attainment	8
Language Knowledge	8
2. Labour Force	9
Employment by Industry	9
Average Income By Occupation – Northern BC	11
Labour Force	12
Employment Rate	12
Labour Participation Rate	12
3. Payroll Costs.....	13
Workers Compensation – 2013	13
Employment Insurance – 2014	13
Social Insurance (Canada Pension Plan) – 2014	14
4. Higher Education	15
Four Year Institutions	15
5. Transportation	16
Major Transportation Routes	16
Highways	18
Northern Corridor Specifications	19
Railroads	20
Commercial Airports	21
Ports	23
Port Shipping Distances	26
6. Industrial & Commercial Land Use.....	27
Land Zoned and Designated in Official Community Plan	27
Acquisition of crown land	27
7. Utilities	28
Water System	28
Waste Water System	28
Landfill and Waste Management	28
Licensed Hazardous Materials Disposal	28

Electric Power	29
Telecommunications	31
8. Business Support Services	32
9. Government	33
Municipal Government	33
Regional District	33
Provincial	33
Premier	33
Provincial Government Representation	34
Federal Government Representation	34
10. Housing	35
Housing Characteristics	35
Average Housing Values	35
11. Taxation	36
Corporate Income Tax	36
Personal Income Tax	36
Sales / Use Tax	36
Sales Tax Rate by Utility	37
12. International Resources	39
Investment and Business Support Offices	39
Financial Institutions	40
Employment Assistance	40
Air Transportation Service	41
13. Quality of Life	42
Climate	42
Culture	43
Health	44

1. DEMOGRAPHICS

POPULATION

MCBRIDE

Population By Age Group	Population (2001)	Population (2006)	Population (2011)	Distribution % (2011)
0-14	155	135	110	18.8%
15-24	95	90	55	9.4%
25-44	210	175	135	23.1%
45-64	165	180	185	31.6%
65+	80	80	90	15.4%
Total:	715	660	585	100.0%
Median Age:	36.1	37.1	44.3	

Data Source: Census Community Profile – <http://www12.statcan.gc.ca/census-recensement/index-eng.cfm?HPA>

NORTHERN BC

Population By Age Group	Population (2001)	Population (2006)	Population (2011)	Distribution % (2011)
0-14	74,855	64,820	83,215	25.8%
15-24	48,185	45,470	58,620	18.2%
25-44	101,595	86,450	95,290	29.6%
45-64	81,160	92,615	69,725	21.6%
65+	27,730	33,260	15,220	4.7%
Total:	333,560	322,615	322,070	100.0%
Median Age:	34.9	38.0	39.6	

Data Source: 2001, 2006 and 2011 Census Community Profiles – <http://www12.statcan.gc.ca/census-recensement/index-eng.cfm?HPA>

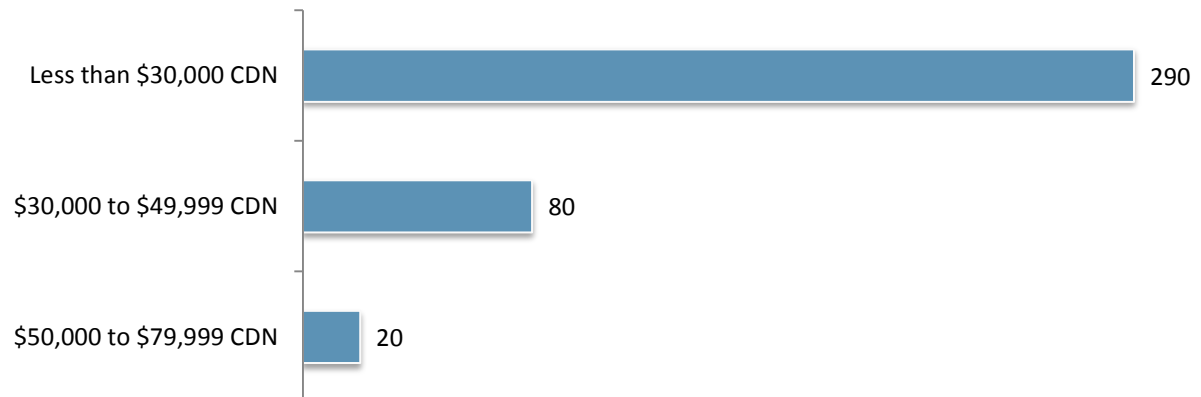
"Northern BC" includes: Regional District of Bulkley Nechako, Cariboo Regional District, Central Coast Regional District, Fraser-Fort George Regional District, Kitimat-Stikine Regional District, Northern Rockies Regional Municipality, Peace River Regional District, Skeena-Queen Charlotte Regional District, Squamish-Lillooet Regional District Electoral Areas A and B, Stikine Region, and Thompson-Nicola Regional District Electoral Areas E and I

HOUSEHOLD INCOME

Household Income	2001	2006	2011
Number of Households	270	250	250
Median Income – Private Households	\$44,770	\$60,609	\$31,120
Median After-tax Income – Private Households	n/a	\$53,117	\$29,278

Data Source: Statistics Canada –2001 & 2006 Census Community Profiles, 2011 National Household Survey – <http://www12.statcan.gc.ca/census-recensement/index-eng.cfm?HPA>

HOUSEHOLD INCOME DISTRIBUTION



Data Source: 2011 National Household Survey - <http://www12.statcan.gc.ca/nhs-enm/index-eng.cfm>



WORKFORCE EDUCATION ATTAINMENT

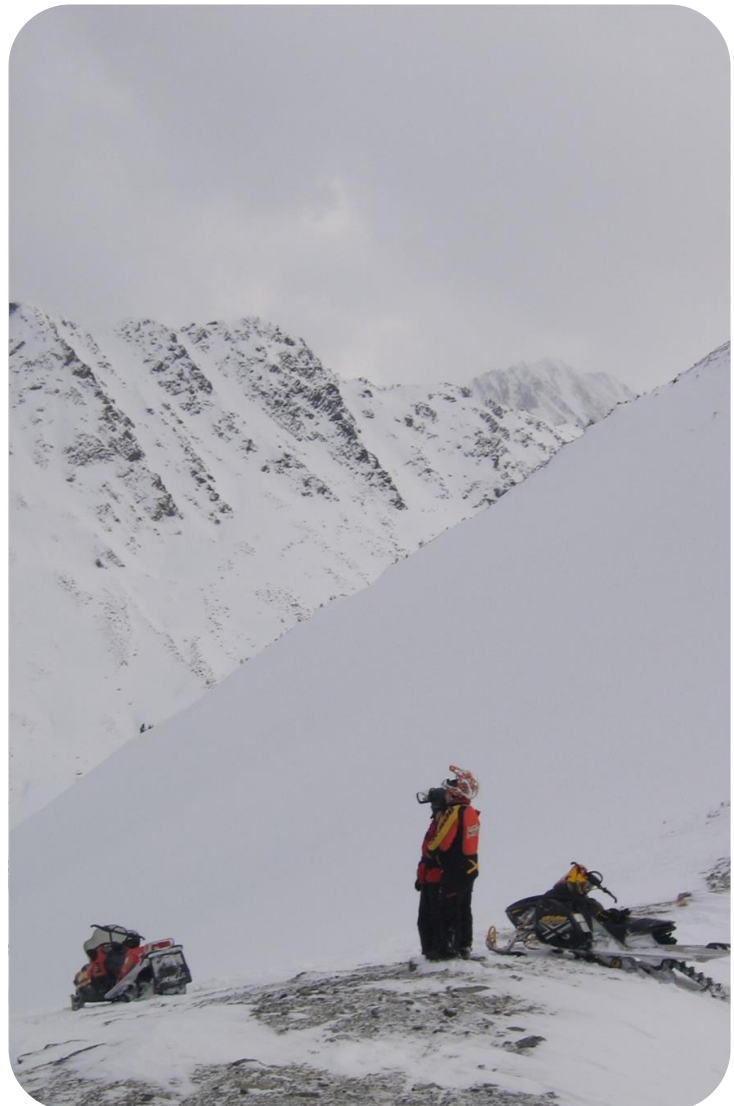
Level of Education	# Attained	%
High School Diploma Only	560	30.4
College/University Certificate/Diploma	385	20.9
Less than High School Diploma	475	25.7
Apprenticeship/Trades Certificate/Diploma	175	9.5
University Bachelors Degree	180	9.8
University Graduate Degree/Certificate	70	3.8

Values Represent McBride & Regional District of Fraser-Fort George Area H
Data Source: 2011 National Household Survey – <http://www12.statcan.gc.ca/nhs-enm/index-eng.cfm>

LANGUAGE KNOWLEDGE

Languages Spoken	Citizens
English	515
Italian	15
German	10
Portugese	5
Dutch	5
Punjabi	5
Ukrainian	5
Russian	5

Data Source: StatsCan - 2011 Census - "Mother Tongue"



2. LABOUR FORCE

EMPLOYMENT BY INDUSTRY

MCBRIDE

Sector (Industry)	Number
Agriculture, Forestry, Fishing & Hunting	0
Mining, Quarrying & Oil and Gas	0
Construction	20
Manufacturing	15
Transportation & Warehousing	25
Utilities	0
Wholesale Trade	0
Retail Trade	50
Services	40
Finance, Insurance & Real Estate	15
Government	35
Total	270*

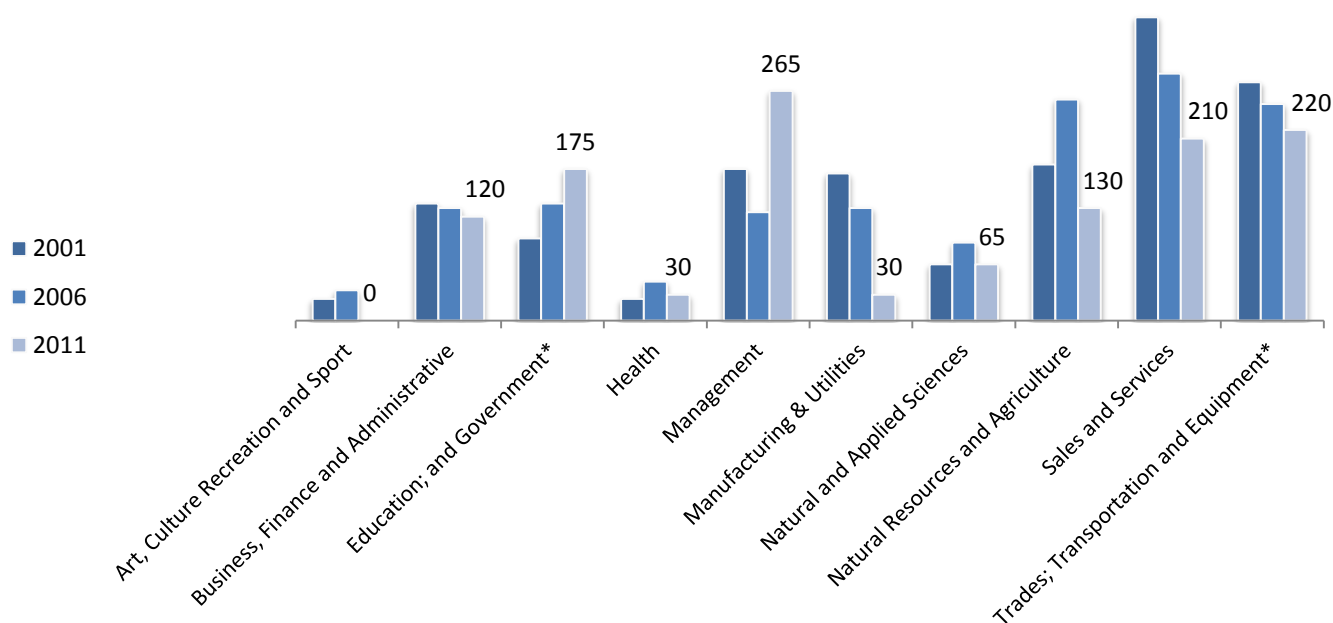
NORTHERN BC

Sector (Industry)	Number
Agriculture, Forestry, Fishing & Hunting	12,160
Mining, Quarrying & Oil and Gas	8,410
Construction	14,170
Manufacturing	15,200
Transportation & Warehousing	10,495
Utilities	1,175
Wholesale Trade	4,650
Retail Trade	18,805
Services	64,685
Finance, Insurance & Real Estate	6,250
Government	12,655
Total	168,655

**Note: Statistics Canada does not publish values below 10*

Data Source: Statistics Canada – National Household Survey 2011- Regional District Profiles; Bulkley-Nechako, Cariboo, Central Coast, Fraser-Fort George, Kitimat-Stikine, Northern Rockies, Peace River, Skeena-Queen Charlotte, Squamish-Lillooet (Areas A & B), and Stikine
<http://www12.statcan.gc.ca/nhs-enm/2011/dp-pd/index-eng.cfm>

EMPLOYMENT BY OCCUPATION



Values represent 2011 data

Includes the Village of McBride and Regional District of Fraser-Fort George Area H

*Education; Law and Social; Community and Government Services/Trades; Transport and Equipment Operators

Data Source: 2001, 2006 and 2011 Census Community Profiles – <http://www12.statcan.gc.ca/census-recensement/index-eng.cfm?HPA>

Statistics Canada National House Survey 2011 - <http://www12.statcan.bc.ca/nhs-enm/2011/dp-pd/prof/index.cfm?lang=e>

TOP EMPLOYERS

Company	Product/Service	Ownership	Website
Northern Health McBride	Health Care	Public	www.northernhealth.ca
Village of McBride	Governance	Public	www.mcbride.ca
BKB Cedar Manufacturing	Cedar Mill	Private	
Home Hardware	Retail	Private	www.homehardware.ca
Robson Valley Support Society	Counselling and support services	Non-Profit	www.robsonvalleysupportsociety.org
School District 57	Education	Public	www.sd57.bc.ca
AG Foods	Grocer	Private	www.agfoods.com

Data Source: Village of McBride – www.mcbride.ca

AVERAGE INCOME BY OCCUPATION – NORTHERN BC

Occupation	Average wage (\$/Hour)(\$CD)	Effective Date
Administrative Clerks	20.98	2015
Bookkeepers	18.58	2015
Business Development Officers, Marketing Researchers and Consultants	27.69	2013
Carpenters	23.50	2015
Civil Engineers	34.00	2013
Computer Engineers	29.86	2013
Crane Operators	27.93	2013
Drafting Technicians	23.75	2013
Electrical Engineers	37.99	2013
Forestry Technicians	24.76	2015
Geological Engineers	34.60	2013
Heavy Equipment Operators	28.00	2015
Industrial and Manufacturing Engineers	28.08	2012
Industrial Electricians	33.39	2013
Labourers in Wood, Pulp and Paper Processing	24.96	2013
Labourers, Processing Manufacturing and Utilities	15.02	2013
Logging Machinery Operators	26.50	2015
Machinists	25.95	2012
Mechanical Engineers	35.00	2012
Mine Labourers	21.42	2013
Mining Engineers	34.23	2012
Petroleum Engineers	33.10	2013
Primary Production Managers	42.74	2013
Purchasing Managers	31.87	2012
Sales Representatives	20.76	2013
Senior Managers - Goods Production, Utilities, Transportation and Construction	43.27	2013
Shippers and Receivers	15.00	2013
Steamfitters	32.87	2013
Trades Helpers and Labourers	22.78	2015
Truck Drivers	32.00	2015

- For a complete list of Wages and Salaries in Northern BC visit
www.workingincanada.gc.ca/LMI_report_area.do?reportOption=wage&PROVINCE_ID=59&GEOAREA_CD=29304&selectLocation=Continue

LABOUR FORCE

	2001	2006	2011
Total Population 15 and over	1,665	2,020	1,400
In Labour Force	1,175	1,479	965
Employed	1,089	1,435	837
Unemployed	116	55	186

Data includes the Village of McBride and the Regional District of Fraser-Fort George Area H
Data Source: 2001 and 2006 Census Community Profiles – <http://www12.statcan.gc.ca/census-recensement/index-eng.cfm?HPA>
2011 National House Survey: <http://www12.statcan.gc.ca/nhs-enm/index-eng.cfm>

EMPLOYMENT RATE

	2001	2006	2011
Unemployment Rate	6.6%	2.7%	21.4%
Labour Participation	75.2%	76.5%	61.5%

Data Source: 2001 and 2006 Census Community Profiles – <http://www12.statcan.gc.ca/census-recensement/index-eng.cfm?HPA>
2011 National House Survey: <http://www12.statcan.gc.ca/nhs-enm/index-eng.cfm>

LABOUR PARTICIPATION RATE

Labour Participation Rate	2001	2006	2011
Male	83.9%	80.8%	77.5%
Female	63.0%	70.2%	50.0%

Data Source: 2001 and 2006 Census Community Profiles – <http://www12.statcan.gc.ca/census-recensement/index-eng.cfm?HPA>
2011 National House Survey: <http://www12.statcan.gc.ca/nhs-enm/index-eng.cfm>

3. PAYROLL COSTS

WORKERS COMPENSATION – 2013

		Notes
Average Cost of All Manufacturing Per \$100 Payroll	\$1.91 CDN	Rates set by employer's business activity. Applies up to maximum gross earnings of \$75,700 per year.
Average Rate for Office Workers Per \$100 Payroll	\$0.29 CDN	There is no separate rating for office occupations in BC- the applicable industry rating applies to all workers. Rates for Business Services range from \$0.10-\$0.79 per \$100 of payroll. Average of \$0.29.
Maximum Weekly Benefit (Net)	\$999.68 CDN	Maximum per employee set at 90% of average net earnings (after deductions for income taxes, Canada Pension Plan & Employment Insurance), up to maximum wage of \$75,700 per year.

Data Source: WorkSafeBC – www.worksafebc.com

EMPLOYMENT INSURANCE – 2014

		Notes
Taxable Base		Based on gross payroll up to a gross per worker salary of \$48,600 per year(CDN).
Percentage Rate (Employer Premium)		
▪ Employee Rate	1.93%	Maximum annual contribution per worker is \$ 937.98 (CDN).
▪ Employer Rate	2.70%	Maximum annual contribution per worker is \$1,313.17(CDN).
▪ Maximum Weekly Benefits	\$514.00 CDN	

Data source: Service Canada - 2013 Premium Rates - www.servicecanada.gc.ca/eng/sc/ei/benefits/regular.shtml



SOCIAL INSURANCE (CANADA PENSION PLAN) – 2014

		Notes
Taxable Base	Gross Payroll \$3,500 CDN	Based on annual gross salary up to \$52,500 basic exemption of \$3,500. Both employers and employees are required to contribute to the Canada Pension Plan.
Employee/Employer Contribution	4.95%	Employer premium equal to employee premium.
Maximum Annual Employer Contribution Per Employee	\$2425.50 CDN	Employer contribution matches employee contribution.
Rate	9.9%	
Maximum Annual Self Employed Contribution	\$4,851.00 CDN	

Data Source: Service Canada – <http://www.servicecanada.gc.ca/eng/services/pensions/cpp/contributions/index.shtml>



4. HIGHER EDUCATION

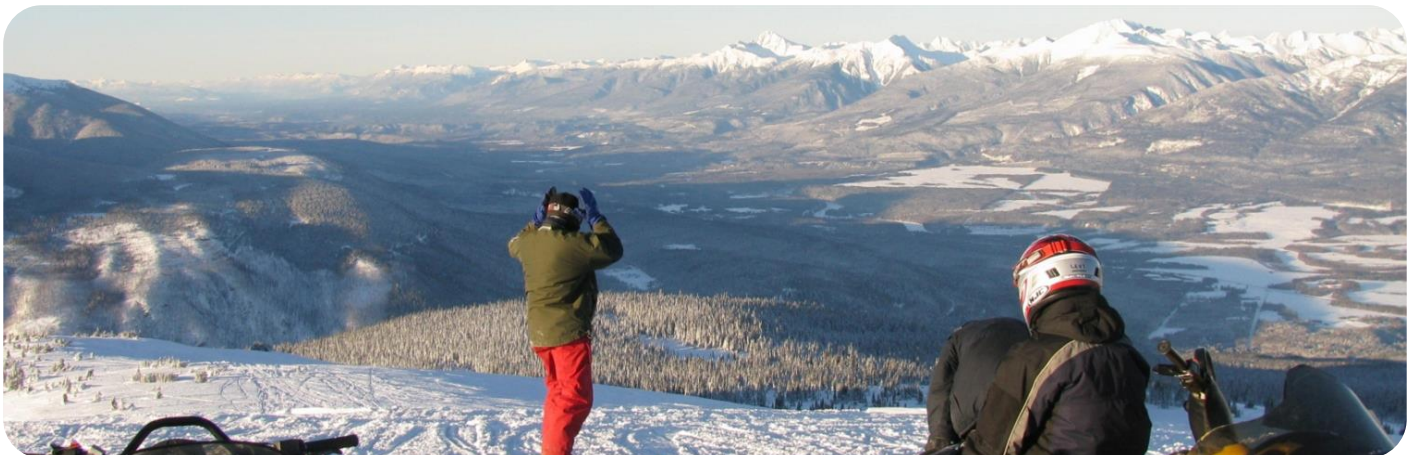
FOUR YEAR INSTITUTIONS

Institution	University of Northern British Columbia
Campus/Address	Prince George Main Campus 3333 University Way, Prince George, BC V2N 4Z9 Tel: 250-960-5555
Other Campuses	Terrace, Fort St. John, Quesnel, Prince Rupert
Website	www.unbc.ca
Driving Distance from Community	211 km (Prince George Campus)
Enrolment (Fall 2013):	3,098 (Prince George Campus)

Data Source: Northern Development Research – www.northerndevelopment.bc.ca

Institution	College of New Caledonia
Campus/Address	Valemount Campus 99 Gorse St., Box 789 Valemount, BC, V0E 2Z0 Tel: 250-566-4601
Other Campuses	Prince George (main campus), Burns Lake, Fort St. James, Mackenzie, Quesnel, Vanderhoof
Website	www.cnc.bc.ca
Driving Distance from Community	84 km
Enrolment (2010/11):	107

Data Source: College of New Caledonia Planning & Institutional Research Office



5. TRANSPORTATION

MAJOR TRANSPORTATION ROUTES

PACIFIC GATEWAY

British Columbia's ports in Vancouver, Kitimat, Stewart and Prince Rupert are Asia's closest ports of entry on the west coast of North America, up to 58 hours closer than the ports of Los Angeles and Long Beach.

Canadian ports and airports are seamlessly integrated with road and rail connections to all major U.S. economic centers. British Columbia is the only gateway on the west coast of the Americas served by three transcontinental railways. Today, Canada's Pacific Gateway is an integrated, secure, reliable transportation network that includes world-class airports, seaports, railways, roadways and border crossings, bringing Canada and the North American market to Asia and the world. Canada's Pacific Gateway, through British Columbia's ports in Vancouver, Kitimat, Stewart and Prince Rupert, offers Asian shippers the most direct route between Asia and North America.

Canada's Pacific Gateway is a strong commitment by government and industry partners to make British Columbia's ports the preferred gateway for Asia-Pacific trade, with the most competitive port system and supply chain on the west coast of the Americas. This commitment builds on Canada's longstanding and strong cultural and economic ties with Asia. In the emerging new global economy, Canada's Pacific Gateway is a gateway to the future.



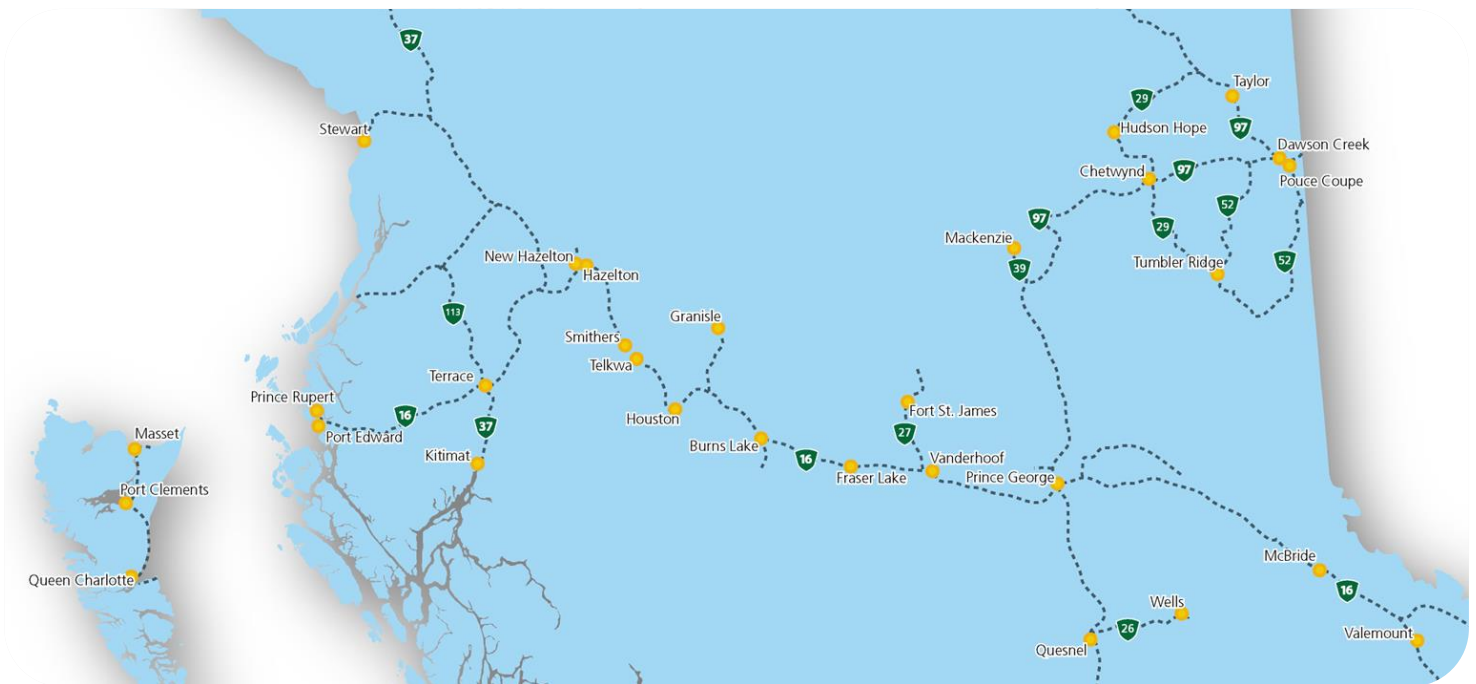
NORTHERN CORRIDOR

The Northern Corridor spans over half of continental Canada and reaches well into the heartland of North America south of Chicago, USA. It travels through the lowest elevations of the Americas great continental divide, also known as the “Yellow Head Pass,” and forms the straightest, shortest, flattest route for Asian- North American trade. Three Northern British Columbia ports provide efficient access to this corridor; Kitimat, Stewart and Prince Rupert. Each port offers unique advantages and services that meet the needs of the region and international trade.

Trans-continental rail, Trans Canada Highway and direct air service into international Air Hubs are in place. The corridor services business covered by the North American Free Trade Agreement, through a variety of break bulk and container services in ports operated by governments and those run by private port interests.

The Northern Corridor is less impeded by road closures, significant weather patterns and avalanches than the Southern Canadian corridor. It provides “one less day” shipping advantage to or from Asia compared to all other North American Port locations including Vancouver and all USA pacific Ports.

Canadian National Rail (CN Rail) reaches well into the heartland of America with shipping agreements in place with major US rail carriers. CN has made significant investments in the Northern Corridor rail line including extended sidings, upgrades to signal systems, increased bridge and tunnel clearances. The corridor is serviced by five international airports and four northern airports with Prince George offering international services. The largest passenger service airport west of Prince George and north of British Columbia’s Okanagan region is the Terrace-Kitimat Northwest Regional airport.



HIGHWAYS



NORTHERN CORRIDOR SPECIFICATIONS

Commercial Vehicle Without Permit	Specifications	Commercial Vehicle With Permit	Specifications
Maximum Width	2.59 meters	Maximum Width	4.4 meters
Maximum Height	4.15 meters	Maximum Height	4.72 meters
Maximum Vehicle Weights		Maximum Vehicle Weights	
Super B	63,500 kgs	Super B	64,000 kgs
Single Axel	9,100 kgs	Single Axel	9,100 kgs
Tandem Axle (set)	17,000 kgs	Tandem Axle (set)	23,000 kgs
Tridem Axle (set)	24,000 kgs	Tridem Axle (set)	29,000 kgs

OVERHEAD CLEARANCE

Yellowhead Highway 16 from BC Border to Prince Rupert	Clearance (meters)
▪ Khyex River Bridge	5.95m
▪ Kitsequcla Overpass	5.7m
▪ Tete Jaune underpass	4.96m
Highway 37 from Hwy 16 North to Yukon Border	
▪ Irving River Bridge #2	5.74m
▪ Devil Creek Bridge	5.74m
Highway 37 from Hwy 16 South to Kitimat	
▪ Williams Creek Bridge	4.97m
▪ Hirsch Creek Bridge	4.72m
▪ Kitimat River Bridge	5.08m
Highway 37A from Hwy 37 To Stewart	
▪ No Clearances	

PROVINCIAL PERMIT CENTRE

For more information on receiving a commercial vehicle permit please contact **1-800-559-9688**. The core hours of service are from 5am to 10pm, seven days a week and most statutory holidays. The 1-800 number is available to callers anywhere in Canada or the United States. Permits available through this line include:

- non-resident commercial vehicle permits
- term oversize and overweight permits
- single trip oversize and overweight permits
- motor fuel tax permits
- highway crossing permits
- extra-provincial temporary operating permits

HIGHWAY DISTANCES

Metro Area	Distance (Km)
Prince George	211 km
Kamloops	401 km
Edmonton	532 km
Vancouver	759 km
Calgary	577 km
Victoria	855 km
Seattle	905 km
Portland	1,184 km

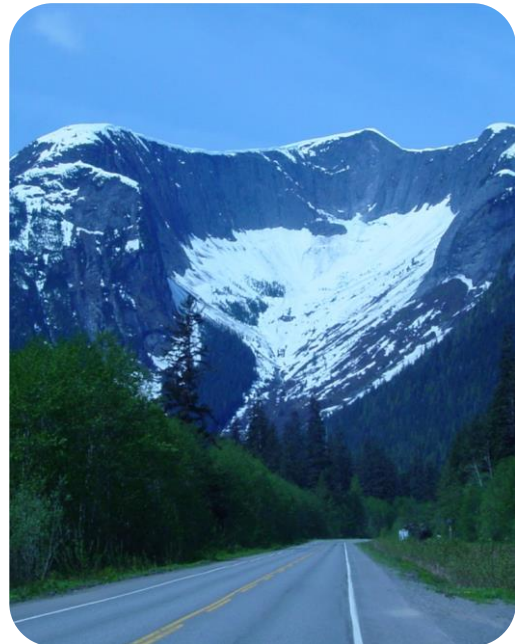
Data Source: Northern Development Research – www.northerndevelopment.bc.ca

RAILROADS

CN Rail	www.cn.ca
Main or Branch Line:	Branch and Main
Shortline or National:	National and Shortline
Distance to Nearest Switching Yard:	211 km
Capabilities	Cargo-Bulk, Container, Liquid, Multi Commodities

VIA Rail	www.viarail.ca
Main or Branch Line:	Branch and Main
Shortline or National:	National and Shortline
Distance to Nearest Switching Yard:	211 km
Capabilities	Passenger

Data Source: Village of McBride – www.mcbride.ca



COMMERCIAL AIRPORTS

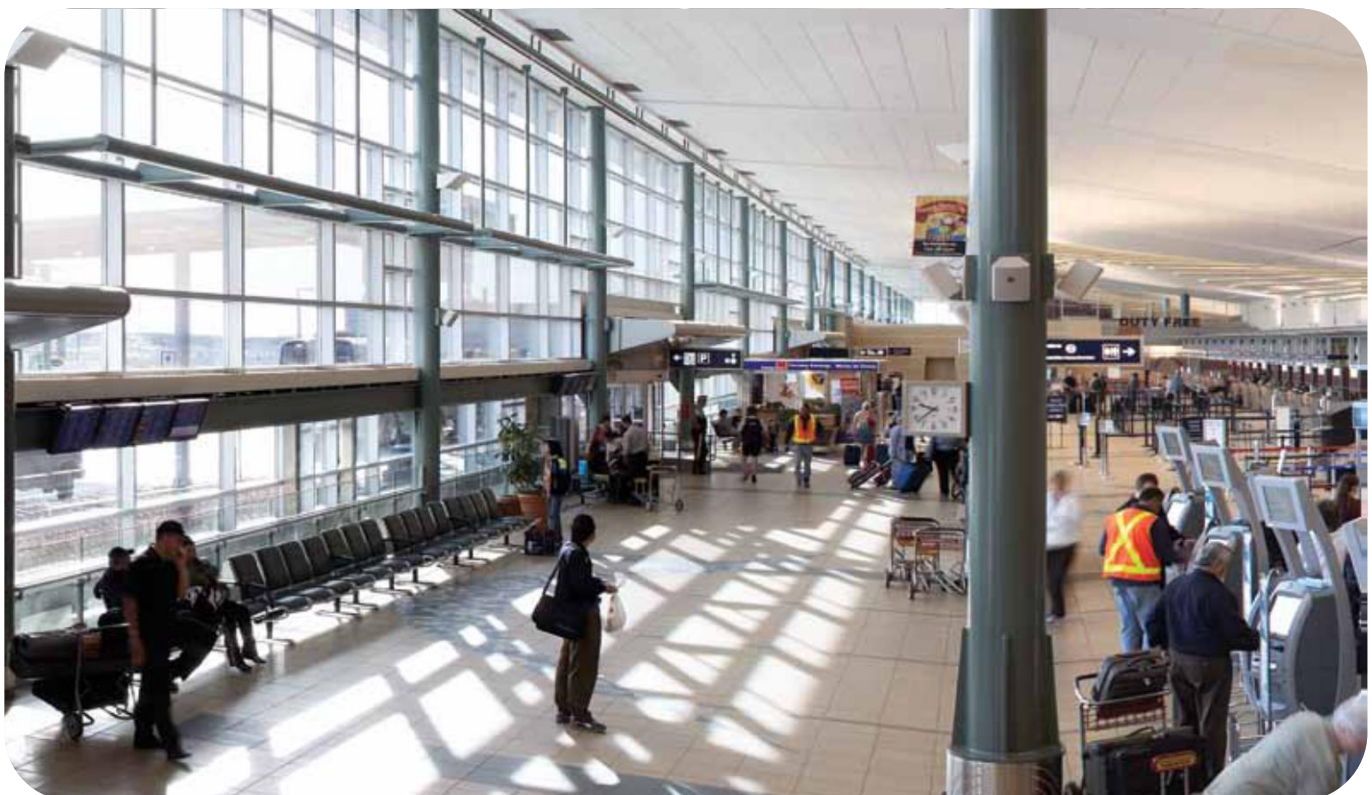
McBride Airport

Hub Status	Regional Airport
Hours of Operation	24 Hours, 7 Days
Customs	No
Number of Runways	1
Runway Length	2,700 ft
Passenger	Independent
Charter/Cargo	None

Edmonton International Airport

Hub Status	International
Distance From Community	531 km
Hours of Operation	24 Hours, 7 Days
Approved Capital Expansion	New gates, NAV control

Data Source: Northern Development Research, Village of McBride – www.mcbride.ca



Prince George Airport	www.pgairport.ca
Hub Status	International
Distance from Community	211 kilometres
Hours of Operation	24 hours, 7 days/week
Approved Capital Expansion	\$2 million - capital expansion
Customs Point of Entry	Yes
Foreign Trade Zone	No
Full Instrumentation	Yes
No. of Runways	3
Runway Length	3,490 metres; 1,714 metres; 1,149 metres
Carriers	Air Canada Jazz , Central Mountain Air, Hawkair, Northern Thunderbird Air, West Jet
Weekly Non-Stop Flights (Average)	106/week

Data Source: Northern Development Research



PORTS

PORT OF PRINCE RUPERT

Port of Prince Rupert	www.rupertport.com
Distance from McBride	926 km
Location of Port	Prince Rupert
Terminals	Fairview (Container) Terminal, Ridley Terminals, (coal, wood pellets), Prince Rupert Grain, Northland Cruise Terminal
Type of Port	Ocean
Channel Depth	35-55 meters
Shallow Water Barging Facilities	Yes
Deep Water Barging Facilities	Yes
General Cargo Facilities	Yes
Containerized Facilities	Yes
Refrigerated Container Facilities	Yes
Cruise Ship Facilities	Yes
Storage Facilities	Yes
Highway Serving Port	#16
Railway Serving Port	CN Rail
Types of Services:	Bulk / break-bulk: Coal, Petroleum Coke, Wood Pellets, Grain, Logs,
Imports	Retail (including electronics, apparel, furniture, auto parts); petroleum products; industrial inputs (tiles, glass)
Exports	Midwest – specialty crops; scrap metal, recycled paper British Columbia – Forest products (lumber, pulp, logs); aluminum, seafood
Shipping Lines	Cosco, Hanjin, Yang Ming, K-Line, Quickload Transloading Services, Shipping Agents, GW Nickerson Co., Northcoast Shipping, Rupert Marine Shipping, Tidal Transport & Trading Ltd.



PORT OF KITIMAT

Private Port of Kitimat	www.kitimat.ca/EN/main/business/invest-in-kitimat/port-of-kitimat.html
Distance from McBride	840 km
Terminals	Rio Tinto Alcan - Break Bulk Terminal Methanex Petrochemical Terminal Eurocan Breakbulk Terminal
Type of Port	Deep Sea
Channel Depth	45- 200 fathoms,18-185 Meters (59-607 Feet)
Turning Basin	1.1 - 2.2 nautical miles
Shallow Water Barging Facilities	Yes
Deep Water Barging Facilities	Yes
General Cargo Facilities	Yes
Containerized Facilities	No
Storage Facilities	Yes
Highway Serving Port	Highway # 16 via #37
Railway Serving Port	CN Rail
Types of Services	Bulk/ Break-bulk, Methanol, Ammonia condensate, Pitch, Alumina ,Bauxite condensate
Imports	Pitch, Alumina, Bauxite Condensate, Methanol
Exports	Kraft Paper, Aluminum Sheeting
Shipping Lines	Waterfront Shipping, Gearbulk
Shipping Agents	GW Nickerson Co., TNC Canada
Customs Brokers	GW Nickerson Co., Moore E T S Services
Tug & Barge	SMIT Marine, Seaspace International
Port Accessed by	Highway and Rail



CUSTOM POINT OF ENTRY

Canadian Border Services Agency	Prince Rupert
Type of Entry Point	Port
Location	368-309 2nd Ave West Prince Rupert BC Canada V8J 3T1 Tel: 250-627-3003

Data Source: City of Prince Rupert – www.princerupert.ca
Data Source: Northern Development Research – www.northerndevelopment.bc.ca



PORT SHIPPING DISTANCES

The NW Transportation and Trade Corridor ports (Kitimat and Prince Rupert, Stewart) are between 1 and 1 1/2 day closer to general Asia Pacific markets than the Ports in British Columbia's lower mainland; and the Vancouver Ports. The Southern Ports are closer to the Panama Canal and subsequently, the Atlantic. The following table is in nautical miles. The Time/Speed/Distance Calculations are at 16.1439 Kn/Hr., the average speed The Port of Vancouver uses for calculating their shipping to Yokohama, Hong Kong, Kaohsiung (Taiwan) and Xingang (China). Deep-sea vessels travel at various speeds between 14Kn/Hr and 20Kn/Hr. The 'great circle shipping route' to Asia from North America has well documented ocean currents and weather/wind patterns which allows for accurate estimates.

	Kitimat	Prince Rupert	Stewart	Vancouver	Los Angeles	Yokohama (Japan)	Hong Kong	Kaohsiung Kang(Taiwan)	Xingang (China)
Kitimat	-- 7.5 Hrs.	121 NM 7.5 Hrs.	264 NM 17 Hrs.	400 NM 1 Day	1,391 NM 3.5 days	3,941 NM 10 Days	5,444 NM 14 Days	6,,187 NM 16 Days	6,187 NM 16 Days
Prince Rupert	121 NM 7.5 Hrs.	--	123 NM 10 Hrs.	477NM 1.2 Days	1,432NM 3.6 Days	3,810NM 9.8 Days	5,323NM 13.7 Days	6,110NM 15.7 Days	6,110NM 15.7 Days
Stewart	264 NM 17 Hrs .	123 NM 10 Hrs.	--	573 NM 1.5 Days	1,529 NM 4 Days	3,896 NM 10.3 Days	5,406 NM 14.1 Days	5,155 NM 13.4 Days	4,749 NM 12.5 Days
Vancouver	400 NM 1 Day	477 NM 1.2 Days	573 NM 1.5 Days	--	991NM 2.5 Days	4,262NM 11 Days	5,763NM 15 Days	6,587NM 17 Days	7,578NM 20 Days
Los Angeles	1,391 NM 3.5 Days	1,432 NM 3.6 Days	1,529 NM 4 Days	991NM 2.5 Days	--	4,839NM 12.5 Days	6,380NM 18 Days	7,578NM 20 Days	8,959NM 23 Days
Yokohama	3,941 NM 10 Days	3,810 NM 9.8 Days	3,896 NM 10.3 Days	4,262NM 11 Days	4,839NM 12.5 Days	--	1,585NM 4 Days	1,335NM 3.4 Days	1,335NM 3.4 Days
Hong Kong	5,444 NM 14 Days	5,323 NM 13.7 Days	5,406 NM 14.1 Days	5,763NM 15 Days	6,380NM 18 Days	1,585NM 4 Days	--	290NM 18 Hrs.	2,90NM 18 Hrs.
Kaohsiung Kang	6,187 NM 16 Days	6,587 NM 17 Days	5,155 NM 13.4 Days	6,587NM 17 Days	7,578NM 20 Days	1,335NM 3.4 Days	290NM 18 Hrs.	--	227NM 14 Hrs.
Xingang	6,187 NM 16 Days	6,587 NM 17 Days	4,749 NM 12.5 Days	7,578NM 20 days	8,959NM 23 Days	1,335NM 3.4 Days	290NM 18 Hrs.	227NM 14 Hrs.	--

Source: United States Government. "Distances Between Ports" Prepared and published by the National Imagery and Mapping Agency, Bethesda, Maryland. Ninth Edition 1997. *Time/Speed/Distance Calculations at 16.1439 Kn/Hr., the average speed Vancouver Port lists to reach Yokohama, Hong Kong, Kaohsiung (Taiwan) and Xingang (China)

6. INDUSTRIAL & COMMERCIAL LAND USE

LAND ZONED AND DESIGNATED IN OFFICIAL COMMUNITY PLAN

	Industrial Land	Commercial Land
Total	32	62.3
Acres Developed	22	37
Acres Vacant	10	25.3

ACQUISITION OF CROWN LAND

- Crown land is land that is owned by the Province of British Columbia. The Province is the steward of the land and can lease, license and sell Crown land for a variety of purposes including residential, commercial, industrial, agricultural, tourism and recreational purposes.

Company	Contact	Notes
Integrated Land Management Bureau	FrontCounterBC@gov.bc.ca	Develops Crown land parcels with values up to \$2.5 million
Ministry of Tourism, Culture and the Arts	Tel: 250-371-3952	Handles land sales related to resort development, under the All Seasons Resort Policy.
Ministry of Transportation	Tel: 250-387-3198	Handles land sales related to public airports and port authorities and the marketing of Crown land is done through MLS Realtors

- To view properties that the Federal Government of Canada has for sale, please visit: <http://reo.pwgsc.gc.ca/public/>



7. UTILITIES

WATER SYSTEM

Water within the Village of McBride is sourced primarily from a surface supply source from Dominion Creek with the Water Reservoir Located near Lucille Mountain. The water is treated with a UV Treatment and Chlorine. Major upgrades were completed in 2010 improving the overall reliability of the system and water quality.

The Village of McBride Public Works Department is responsible for the operation and maintenance of the System. For more information contact the village office at 250- 569-2229.

WASTE WATER SYSTEM

McBride's Waste Water System facility is currently under expansion to accommodate 60 year economic development in the area. More information will be provided upon completion of the project in the year 2013.

LANDFILL AND WASTE MANAGEMENT

Name of Landfill	Regional District of Fraser-Fort George
Location	Hwy 16, McBride, BC
Capacity Left at Current Site	Contact Regional District of Fraser-Fort George 1-800-667-1959
Plans for New Capacity	Contact Regional District of Fraser-Fort George 1-800-667-1959

Data Source: Village of McBride - www.mcbride.ca

LICENSED HAZARDOUS MATERIALS DISPOSAL

Name of Site	None Located Directly Within The Community
No. of Licensed Hazardous Waste Haulers Serving the Area	Contact Regional District of Fraser-Fort George 1-800-667-1959

Data Source: Village of McBride - www.mcbride.ca



ELECTRIC POWER

Provider: BC Hydro	www.bchydro.com
Enquiries to hook up new property	1-877-520-1355
Enquiries about existing properties already hooked up	1-800-224-9376
Net Importer/Exporter of Power:	Net Exporter – BC Hydro generates between 43,000 and 54,000 GWH of electricity annually.
% of Reserve Margin Including Generation & Net Purchases	8% as per WSCC guidelines plus an additional 8% surplus
Average Electrical Service Availability Index	
▪ Most Recent Year	99.940
▪ Last 5 Years	99.9314
Name of Power Pool Membership	Formal membership in WSCC, WSPP, Power Pool of Alberta (PPA), MAPP. Also active in SPP and CalPX
Source Electric Power Deregulated	Wholesale competition allowed
Residential Customers	6.90 cents per kWh for the first 1,350 kWh they use over a two-month billing period. Above that amount, customers pay 10.34 cents per kWh for the balance of the electricity used during the billing period.
Business Customers	Average Cost Per kWh
Small General Service Rate	<i>Annual peak demand less than 35kW</i>
▪ Basic Charge	\$0.1953 cents per day
▪ All kWh	\$0.0928 per kWh
▪ Minimum Charge	\$0.1953
▪ Rate Rider	5% Rate Rider applied to all charges, before taxes and levies.
Medium General Service Conservation Rate	<i>Annual peak demand between 85 and 150 kW</i>
▪ Basic Charge	\$0.1953 cents per day
▪ Demand Charge	\$0.00 per kW for first 35 kW \$4.76 per kW for next 115 kW \$9.13 per kW for remaining kW
▪ Energy Charge	Part 1: First 14,800 kWh \$0.0885 per kWh All additional kWh \$0.0549 per kWh up to baseline Part 2: \$0.0956 per kWh for usage up to 20% above baseline \$0.0956 per kWh for savings down to 20% below baseline (credit) Usage or savings beyond 20% of baseline are based on Part 1 prices

<ul style="list-style-type: none"> ▪ Discounts 	<p>1.5% on entire bill if customer's electricity is metered at primary potential</p> <p>\$0.25 per kW if customer supplies transformation from a primary to a secondary potential.</p> <p>If a customer is entitled to both discounts the 1.5% discount is applied first.</p>
<ul style="list-style-type: none"> ▪ Minimum Charge 	<p>50% of the highest maximum demand charge billed in any month within an on-peak period (1 November to 31 March inclusive) during the preceding 11 months.</p>
<ul style="list-style-type: none"> ▪ Rate Rider 	<p>5% Rate Rider applied to all charges, before taxes and levies.</p>
<p>Large General Service Conservation Rate</p>	<p><i>Annual peak demands equal to or greater than 150 kW or total annual energy usage of at least 550,000kWh.</i></p>
<ul style="list-style-type: none"> ▪ Basic Charge 	<p>\$0.1953 per day</p>
<ul style="list-style-type: none"> ▪ Demand Charge 	<p>\$0.00 per kW for first 35 kW</p> <p>\$4.76 per kW for next 115 kW</p> <p>\$9.13 per kW for remaining kW</p>
<ul style="list-style-type: none"> ▪ Energy Charge 	<p>Part 1:</p> <p>\$0.0961 per kWh for first 14,800 kWh</p> <p>\$0.0462 per kWh for remaining kWh up to baseline</p> <p>Part 2:</p> <p>\$0.0956 per kWh for usage up to 20% above baseline</p> <p>\$0.0956 per kWh for savings down to 20% below baseline (credit)</p> <p>Usage or savings beyond 20% of baseline are based on Part 1 prices</p>
<ul style="list-style-type: none"> ▪ Discounts 	<p>1.5% on entire bill if customer's electricity is metered at primary potential</p> <p>\$0.25 per kW if customer supplies transformation from a primary to a secondary potential</p> <p>If a customer is entitled to both discounts the 1.5% discount is applied first</p>
<ul style="list-style-type: none"> ▪ Monthly Minimum Charge 	<p>50% of the highest maximum demand charge billed in any month within an on-peak period (1 November to 31 March inclusive) during the preceding 11 months</p>
<ul style="list-style-type: none"> ▪ Minimum Energy Charge 	<p>\$0.0285 per kWh applies when the Energy Charge (Part 1 and 2) divided by the total kWh is less than \$0.0281 per kWh</p>
<ul style="list-style-type: none"> ▪ Rate Rider 	<p>5% Rate Rider applied to all charges, before taxes and levies</p>
<p>Industrial: Transmission Service</p>	<p><i>Mines, chemical plants, large sawmills, pulp and paper mills, large manufacturing</i></p>
<ul style="list-style-type: none"> ▪ Demand Charge 	<p>\$6.353 per kVA of billing demand</p>

▪ Energy Charge	\$0.0332 per kWh applied to all kWh up to and including 90% of the customers baseline load (CBL) in each billing year. \$0.0736 per kWh applied to all kWh above 90% of the CBL in each billing year.
▪ Minimum Charge	\$6.353 per KVa of billing demand per billing period
▪ Rate Rider	5% Rate Rider applied to all charges, before taxes and levies.

TELECOMMUNICATIONS

Name of Provider	Telus
Address	#5-3777 Kingsway Burnaby, BC V5H 3Z7
Website	www.telus.net
Contact#	
▪ Residential	Tel: 250-310-2255
▪ Business	Tel: 250-310-3100

Service Characteristics of The Office:

▪ Switch Technology	Digital
▪ Fiber Service provided	No
▪ Mbps LAN Service Available	Up to 25 Mbps
▪ Monitoring- Remotely or On-Site	Remotely
▪ ISDN Available	No
▪ ADSL Available	No
▪ ADSL Available From Switch	No
▪ Central Office on Self-Healing Fiber Ring	No
▪ Dual Feed from Two Separate Switching Offices	No
▪ Multiple Route Diversity	No

Data Source: Northern Development Research – www.northerndevelopment.bc.ca

8. BUSINESS SUPPORT SERVICES

Business Support Services	
Machine Shop (Tool & Die)	0
Welding	2
Office Equipment Service & Repair	1
Employment Services	1
International Support Services	
Import/Export Brokers	0
International Courier Services	2
Freight Forwarders	1

Data Source: Village of McBride – www.mcbride.ca



9. GOVERNMENT

MUNICIPAL GOVERNMENT

Village of McBride

Form (Structure)	Mayor & Council
Number of Elected Officials	5
Mayor	Loranne Martin

REGIONAL DISTRICT

Regional District of Fraser-Fort George

Form (Structure)	Chair & Board
Number of Elected Officials	14
Area Director	Dannielle Allan

PROVINCIAL

Government of British Columbia

Form (Structure)	British Parliamentary
Number of Elected Officials	85
How Often Does Legislature Convene	Approx. 19 weeks/year

PREMIER

Name	Christy Clark
Affiliation	British Columbia Liberal Party
Year Elected	May 11, 2011
Current Term Expiration	2 Years
Allowed to Run for Another Term	Yes
Next Election Date	Tuesday, May 9, 2017

PROVINCIAL GOVERNMENT REPRESENTATION

Name of Member of Legislative Assembly (MLA)	Shirley Bond
Total Members of Legislative Assembly	1
Electoral District	Prince George – Valemount
Party Affiliation	BC Liberal

FEDERAL GOVERNMENT REPRESENTATION

Name of Member of Parliament (MP)	Bob Zimmer
Electoral District	Prince George – Peace River
Year Elected	2011
Party Affiliation	Conservative

SENATORS

No. of Appointed Officials	In Canada there are ordinarily 105 Senators appointed by the Governor General on the advice of the Prime Minister.
-----------------------------------	--



10. HOUSING

HOUSING CHARACTERISTICS

Dwelling Type	Number
Single-detached houses	210
Movable dwelling	20
Other dwelling	25
Semi-detached houses	0
Row houses	15
Apartments, duplex	0
Other single-attached house	5
Total private dwellings	312

Data Source: StatsCan - 2011 Census - "Community Profile"

AVERAGE HOUSING VALUES

Municipality	Single Family Homes	Multi-Family Homes
Village of McBride	\$141,000	-

Data Source: BC Assessment 2015 Assessment Roll - <http://www.bcasessment.ca/Pages/AssessmentRollInformation.aspx>



11. TAXATION

CORPORATE INCOME TAX

	Small Business	Manufacturing	Non-Manufacturing
Federal			
▪ Rate	11%	15%	15%
▪ Formula (Sales, Property & Payroll)	n/a	n/a	n/a
▪ Accelerated Depreciated Permitted	Yes	Yes	Yes
Provincial			
▪ Rate	2.5%	10.0%	10.0%
▪ Formula (Sales, Property & Payroll)	Sales & Payroll	Sales & Payroll	Sales & Payroll
▪ Accelerated Depreciated Permitted	No	No	No
Local			
<i>British Columbia has no local taxes</i>			
Total Federal and Provincial Corporate Income Tax	13.5%	25%	25%

PERSONAL INCOME TAX

	Federal	State/Provincial	Local
Earned Income	15 – 29%	5.06 – 14.7%	0%
Unearned Income (e.g. Dividends)	0 – 14.55%	0 – 3.92%	0%
Capital Gains	7.5 – 14.5 %	2.08 – 7.35%	0%

SALES / USE TAX

	Rate	Notes
Goods and Services Sales Tax	5%	GST on business inputs is fully recoverable
Provincial Sales Tax	7%	PST Retail Sales Tax
Local	0%	BC has no local sales tax
Total (Effective Combined Rate) Business	7%	Net of GST 0% for production machinery and equipment for eligible manufacturers

SALES TAX RATE BY UTILITY

	Yes/No	Rate	Notes
Electric Power	Yes	12%	5% GST is fully recoverable
Natural Gas	Yes	12%	5% GST is fully recoverable
Fuel Oil	Yes	12%	5% GST is fully recoverable
Water	No	0%	-
Sewer	No	0%	-
Hazardous Waste Disposal	Yes	12%	5% GST is fully recoverable

TELEPHONE SUBJECT TO SALES/USE TAX

	Yes/No	Rate	Notes
Local	Yes	12%	5% GST is fully recoverable
Long Distance	Yes	12%	5% GST is fully recoverable

MACHINERY AND EQUIPMENT SUBJECT TO SALES/USE TAX

	Yes/No	Rate	Notes
Production	No	0%	-
Non-Production	Yes	12%	5% GST is fully recoverable
Pollution Control	Yes	12%	5% GST is fully recoverable
Office Equipment & Fixtures	Yes	12%	5% GST is fully recoverable

SALES/USE TAX ON TANGIBLE PROPERTY

	Yes/No	Rate	Notes
Office Building Construction Materials	Yes	12%	5% GST is fully recoverable
Industrial Building Construction Materials	Yes	12%	5% GST is fully recoverable
Manufactures Raw Materials	No	0%	-
Standard Software	Yes	12%	5% GST is fully recoverable
Custom Software	Yes	12%	5% GST is fully recoverable

SALES/USE TAX ON INTANGIBLE PROPERTY

	Yes/No	Rate	Notes
Accounts Receivable	No	0%	-
Capital Stock	No	0%	-
Stock/Bond Transaction Fee	No	0%	-



12. INTERNATIONAL RESOURCES

INVESTMENT AND BUSINESS SUPPORT OFFICES

McBride and District Chamber of Commerce

Address	Box 2, McBride, British Columbia V0J 2E0
Phone Number	Tel: 250-569-3366
E-Mail	come2mcbride@telus.net

Northern Development Initiative Trust

Contact Name	Dean McKinley, Director, Economic Development
Address	301 – 1268 Fifth Avenue, Prince George BC V2L 3L2
Phone Number	Tel: 250-561-2525
E-Mail	dean@northernddevelopment.bc.ca

Community Futures Fraser-Fort George

Contact Name	Susan Stearns, General Manager
Address	Box 519, McBride, BC V0J 2E0 Canada
Phone Number	Tel: 250-569-2229
Webpage	www.cfdc.bc.ca

Ministry of Jobs, Tourism, and Innovation – Regional Economic Operations

Contact Name	Myles Bruns, Regional Economic Manager
Address	Suite 510 - 175 2nd Avenue, Kamloops, BC, V2C 5W1
Phone Number	Tel: 250-371-3931
E-Mail	Myles.Bruns@gov.bc.ca

Invest BC

Contact Name	Michael Track, A/Executive Director – Investor Services
Address	999 Canada Place, Suite 730, Vancouver BC V6C 3E1
Phone Number	Tel: 604-775-2202
E-Mail	michael.track@gov.bc.ca

FINANCIAL INSTITUTIONS

Name of Company	Address	Telephone	Website
Scotiabank	Main St & 3 Ave, McBride BC VOJ 2E0	Tel: 250-569-2241	www.scotiabank.com

Data Source: Village of McBride - www.mcbride.ca

EMPLOYMENT ASSISTANCE

Name of Company	Address	Telephone	Website
Robson Valley Home Support Society	942 3 rd Avenue, McBride BC, VOJ 2E0	Tel: 250-569-2266	robsonvalleysupportsociety.org

Data Source: Village of McBride - www.mcbride.ca



AIR TRANSPORTATION SERVICE

Largest International Airport	Vancouver	
Distance to Airport	1,150 km	
Customs Point of Entry	No	
Foreign Trade Zone	No	
Full Instrumentation	No	
No. of Runways	3	
Runway Length	3,018 m; 3,597 m; 2,225 m	
Carriers		
▪ Passenger	51	
▪ Cargo	18	
▪ Charter	7	
Weekly Non-Stop Flights	63	
Air Service to Northwest Regional Airport	Flight Frequency	Flight Duration
Air Canada www.aircanada.com	3/day, Sunday-Friday 2/day, Saturday	1:20 hr
Hawkair www.hawkair.ca	4/day, Sunday-Friday 2/day, Saturday	2 hrs



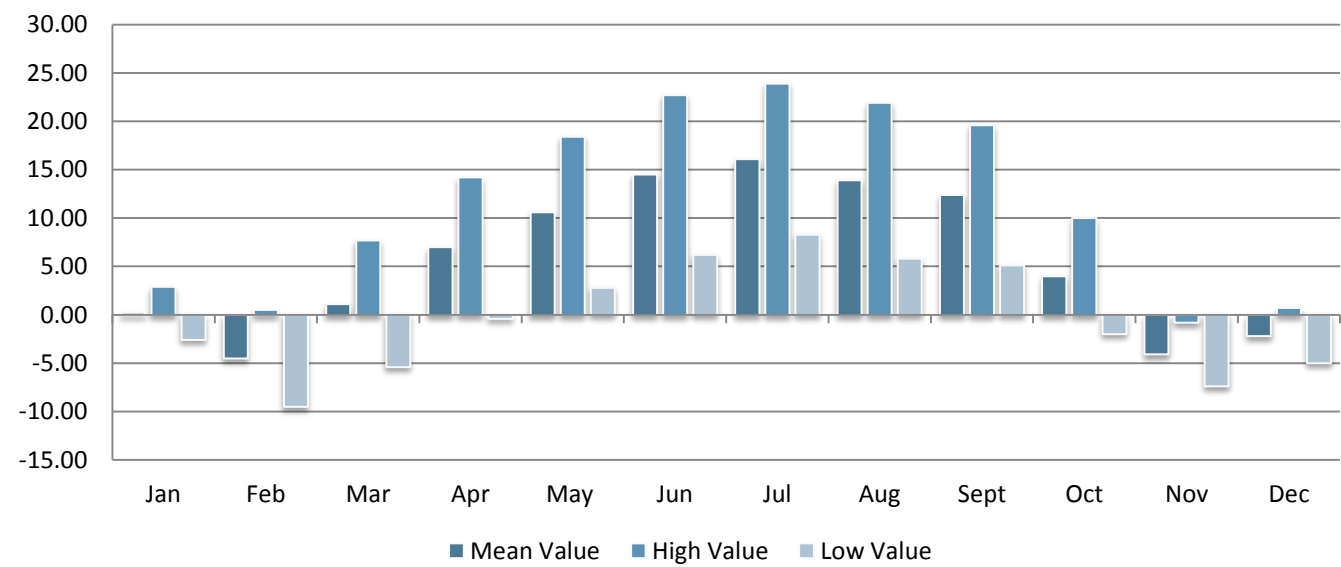
13. QUALITY OF LIFE

CLIMATE

Location: McBride, BC Canada
Latitude: 53°30'13" N
Longitude: 120°16'82" W



AVERAGE TEMPERATURE IN DEGREES CELSIUS BY MONTH



Data Source: Environment Canada - "National Climate Data And information Archive" - http://www.climate.weatheroffice.ec.gc.ca/climateData/canada_e.html

CULTURE

TOP ANNUAL EVENTS

Top Events	Date(s)
Pioneer Days Celebrations	June
Adventure Weekend	June
Robson Valley Fall Fair	August
Robson Valley Music Festival	August
Ice Cream Social	August
Festival of Lights	December
Christmas Gala	December 24 th

Data Source: Village of McBride - www.mcbride.ca

CULTURAL PLACES AND AMENITIES

Amenity
▪ Roundhouse Theatre
▪ Heritage Railway Station
▪ Whistle Stop Gallery
▪ McBride Scale Model Solar System

Data Source: Village of McBride - www.mcbride.ca

CULTURE AND RECREATION

Amenity	Number
Religion	
▪ Catholic Churches	1
▪ Protestant Churches	6
▪ Synagogues	0
▪ Other Religious Institutions	2

Data Source: Northern Development Research –
www.northerndevelopment.bc.ca



RECREATIONAL AMENITIES WITHIN 2 HOURS

Amenity	Activity
▪ CMH Heli-Skiing	Heli-Skiing
▪ Ozalenka Park	'Hike to' Camping and a Cabin
▪ Belle Mountain	Cross-Country Ski Trails
▪ Dore River, Fraser River	River Rafting
▪ Boating & Fishing	Fraser River
▪ Hunting	Northern BC Hunting Territory
▪ Hiking Trails	Beaver Falls Trail, Ancient Cedar Forest, McBride Peak
▪ Snowshoeing	Kristie Glacier, Mount Lucille
▪ Snowmobiling	Mount Lucille, Belle Mountain
▪ Hiking, Climbing, Ice-Climbing	Mount Robson Provincial Park

Data Source: Village of McBride - www.mcbride.ca



HEALTH

HOSPITALS

Hospital	McBride and District Hospital
Teaching Hospital	No
Number of Beds	16
Outpatient Clinic	No
Contact	1135 5th Avenue - Box 128, McBride, BC, V0J Tel: 250-569-2251

Data Source: Northern Development Research – www.northerndevelopment.bc.ca

PHYSICIANS AND DENTISTS

Health Providers (Smithers)	Number
Physicians	0
Dentists	1
Ratio Physicians per 1000	0
Ratio Dentists per 1000	0.4

Data Source: Village of McBride - www.mcbride.ca



Village of McBride

PO Box 519 Robson Centre, McBride, BC V0J 2E0

Tel: (250) 569 2229

www.mcbride.ca



Northern Development Initiative Trust

Contact for information on financial incentives for manufacturing companies

www.northerndevelopment.bc.ca



TRADE AND INVEST BRITISH COLUMBIA

Invest BC

Contact for investor site selection and expansion services.

www.investbc.com